

# Chris Judson

## Portfolio

I'm Chris, a professional, reliable and passionate graphic designer with 15+ years experience. Working for a wide range of brands covering a variety of sectors whilst specialising in graphic, digital and video design.

---

### Contact

[cj.macx@me.com](mailto:cj.macx@me.com)

07944 128666

[chris-creative.co.uk](http://chris-creative.co.uk)

September 2023

 [chrisjudsoncreative](https://www.instagram.com/chrisjudsoncreative)

# Work experience

## LEAD GRAPHIC & DIGITAL DESIGNER

**Your Housing Group, Birchwood** 2018-PRESENT

**Employee of the year 2019**

Working in-house in the social housing sector, an organisation that aims to create places for people to thrive. I am responsible for the inspiration and running of the design team and planning our priority projects. Knowledge of Umbraco web platforms and Interact Intranet. Working in a fast-paced environment which includes designing for **print, signage, web, video and animation**.

## GRAPHIC DESIGNER

**Nectar Creative, Leigh** 2017-2018

Successfully working in an agency environment with an exciting variety of clients including education, health/science, wildlife and other sectors. Working on **print and digital projects**.

## GRAPHIC & EMAIL DESIGNER

**Sports Direct, Wigan** 2015-2017

Senior designer taking lead on email design and development in the specialist sports - equestrian department of Sports Direct.

- Bespoke design/build of html/css responsive email templates
- ESP knowledge of Epsilon, Cheetahmail/Experian

- Responsible for the creation of digital artwork for website landing pages, social media and affiliate artwork
- Responsible for product image re-touching of products
- Involved in print-based marketing projects such as catalogues, signage, advertising and direct mail.

## GRAPHIC DESIGNER

**Robinsons Equestrian, Wigan** 2007-2015

Designer who takes the lead on print and digital projects for a multi-channel e-commerce mail order company.

- Produce digital assets for website, landing pages & social media
- Design mail order/seasonal catalogues & direct mail
- Design product packaging and instore retail POS.

## CREATIVE ARTWORKER

**Nitecrest, Leyland** 2006-2007

## GRAPHIC DESIGNER

**Apollo Print Design, Wigan** 2007



**Your Housing Group**

Your Home Hub - My Account Search Menu

# Hello! Welcome to Your Housing Group

How can we help?

Get in touch today

I'm a YHG customer I'm looking for a home I'm looking for something else



## Already a customer?

Our colleagues are on hand to answer any questions or queries you may have. If you have a question, need more information or want to speak to someone, please use the links below.

### Your Home Hub - My Account

- Your tenancy
- Your rent
- Your repairs
- Your safety
- Customer engagement
- Money advice
- Service standards
- Complaints & comments

# 29,000

homes across the North West, Yorkshire and the Midlands

We have a large and diverse range of homes, from general properties for social and affordable rent, through to retirement living developments and various other private rental offers, such as market rent, key worker accommodation, rent-to-buy and shared ownership.

**We offer a range of services for customers, depending on your needs.**

From money advice, tenancy support, life skills & tips to keep you safe at home.

Find out more

**Connect with us**

Twitter Facebook Instagram YouTube

**Looking for more?**

Find a home About us Latest news Privacy & data  
Your home Your Home Hub Contact us Cookies  
Help & advice Careers Accessibility Sitemap

**Youggle**  
Your window to Your Working World

Faces & Places Working Here What's Happening Useful Links Connect Team Pages

Rose bushes at Heyeswood

System experts

News at Your with Helen Whittingham

Grounds Maintenance working their...

World Wellbeing Week

Wellbeing is fundamental to our health and overall happiness so no matter how busy you are, it's always important to make time to feed your wellbeing - even the smallest changes can make the biggest difference.

Click here to visit your Wellbeing Hub

RFW Tracker Balance for Better Policies & Procedures Wellbeing Hub Book a Meeting Space Managers' Hub



**Youggle**  
Your window to Your Working World

A key part in the build, maintenance and development of our award-winning\* intranet and customer website (Umbraco). From building landing pages and hubs, to contributing to the strategic direction and customer experience. [www.yourhousinggroup.co.uk](http://www.yourhousinggroup.co.uk)

\* *Interact Intranet Awards 2021: Winner of Best Use of Digital Media*



Your Housing Group

## Communications & marketing design

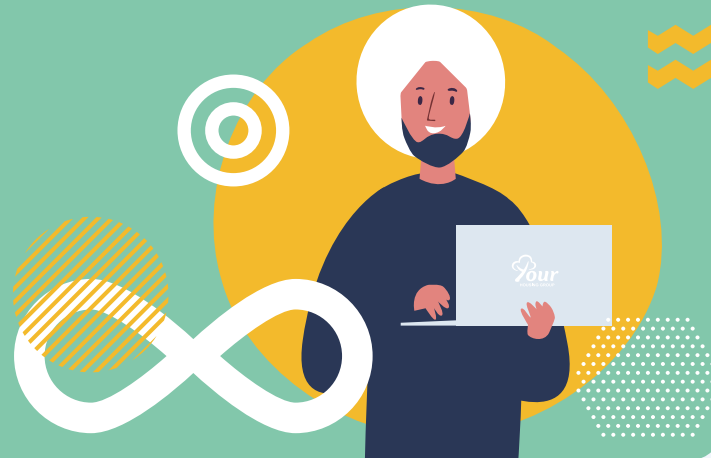
Working in-house to produce print and digital creative for marketing, internal and customer communications. From signage for new build development sites, to social media artwork, newsletters and even video and animation.

[www.yourhousinggroup.co.uk](http://www.yourhousinggroup.co.uk)

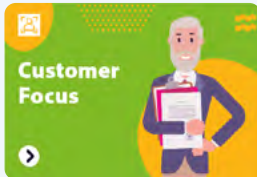
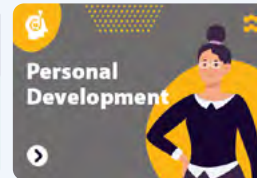


[Home](#)[Find Learning ▾](#)[My Learning](#)[Journal](#)

## Online Learning Improves Career Growth

[Learn more >](#)

### Choose a category

[Trending courses](#)[ED&I courses](#)[Contact L&D Team](#)

Your Housing Group

## helix e-Learning Branding



# helix

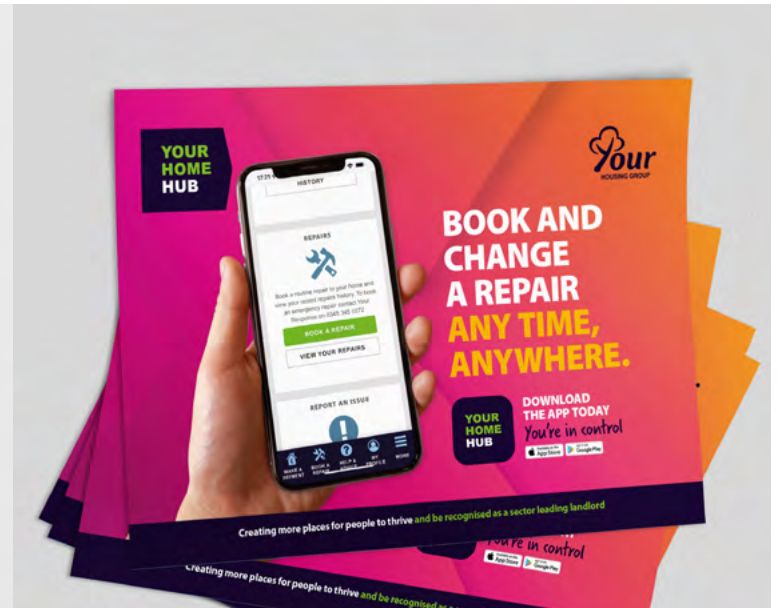
LEARNING DEVELOPMENT WELLBEING







Customer newsletter





**Family Fun Day**  
Internal colleague event











**Hoarding run**  
Development signage







Salford University

## Brochures

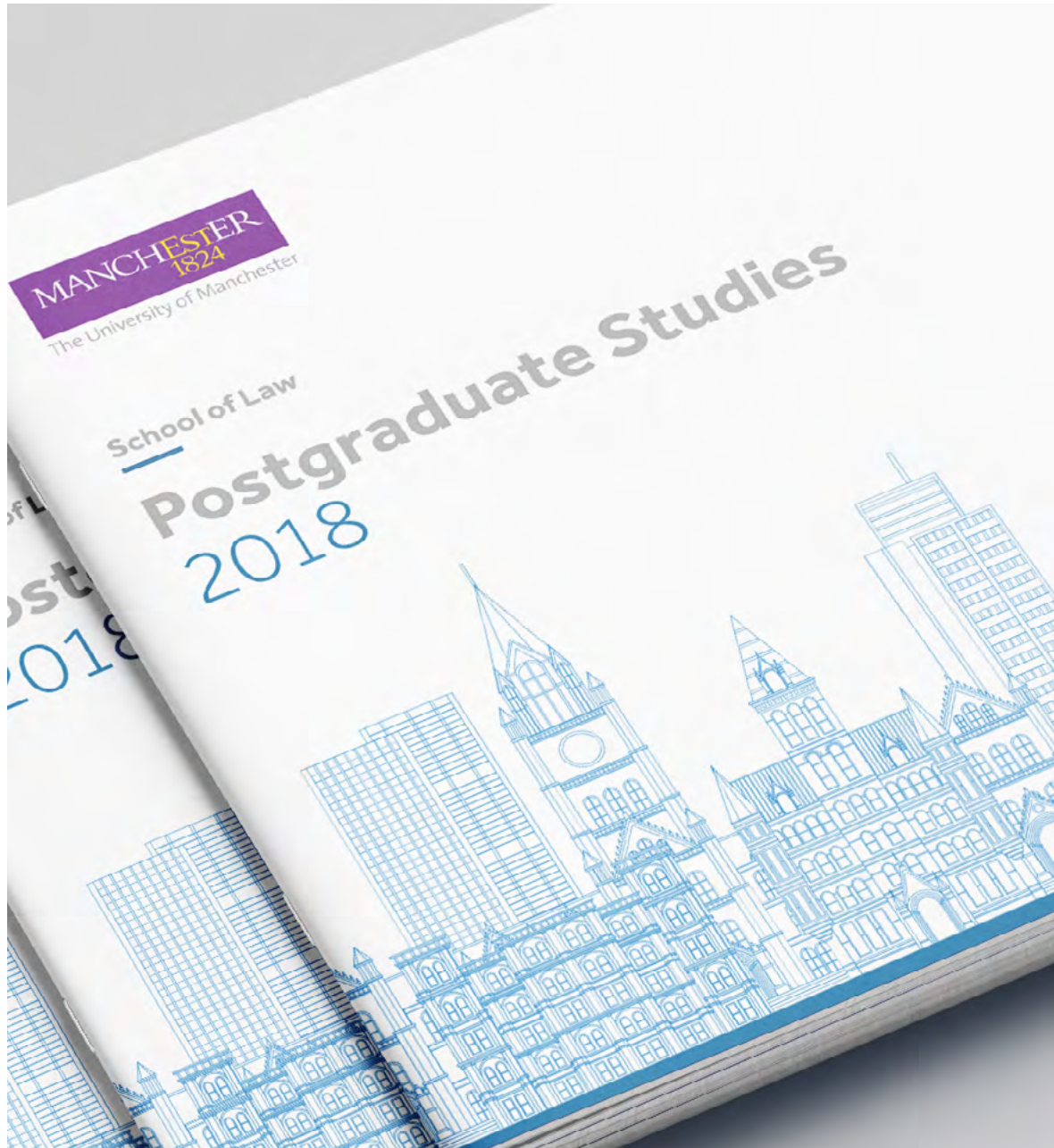
Working with Salford University to create a wide range of printed brochures, pull up banners, and post cards to promote and educate internal and external audiences.

[www.salford.ac.uk](http://www.salford.ac.uk)









Manchester University

## Brochure and marketing design

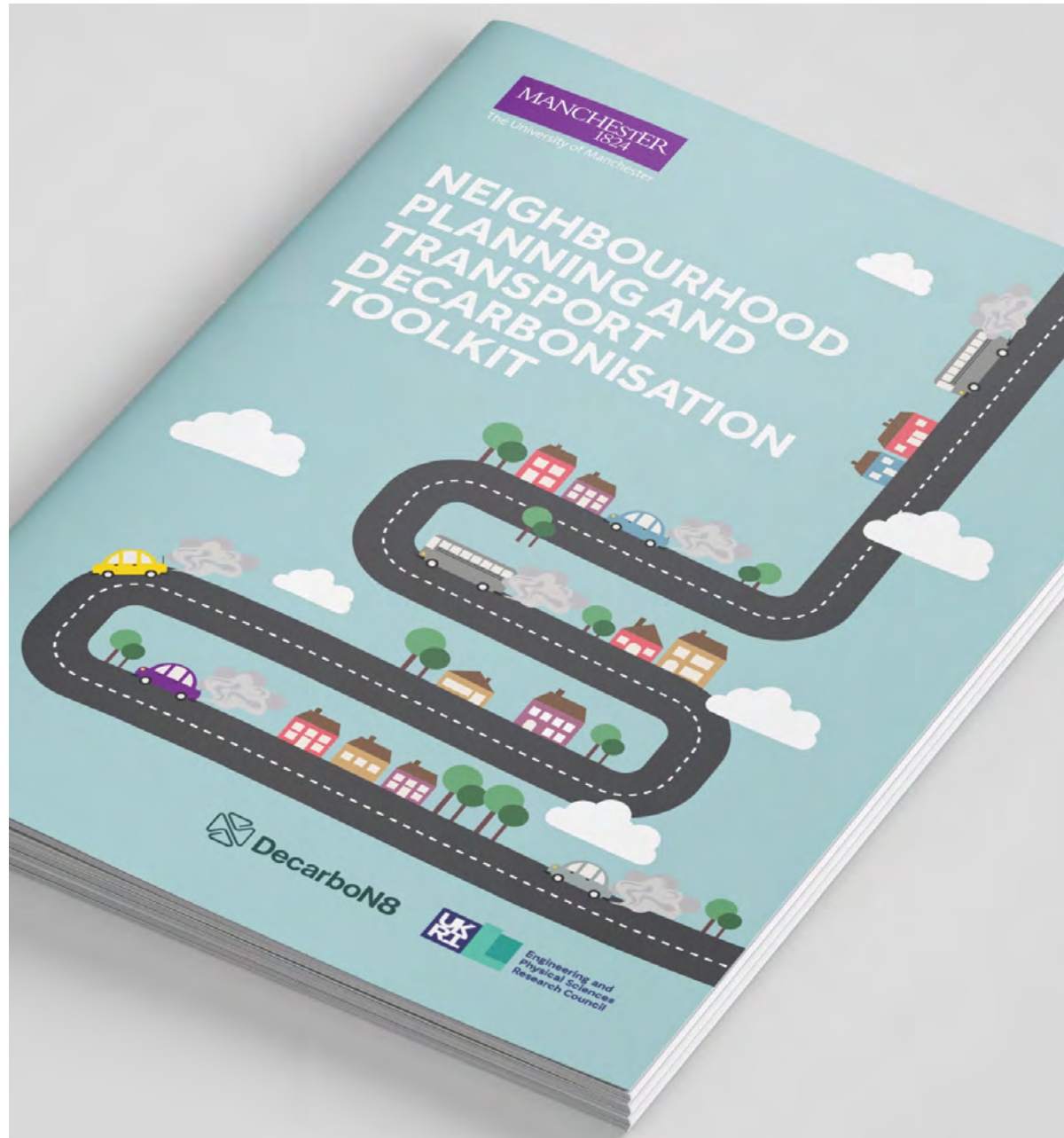
- Postgraduate Studies 2018 brochure
- National Confidential Inquiry into Suicide and Homicide brochure
- Changing Lives A6 postcard
- Get Started pull up banner

Working with The University of Manchester to design various printed brochures for various aspects of the University.

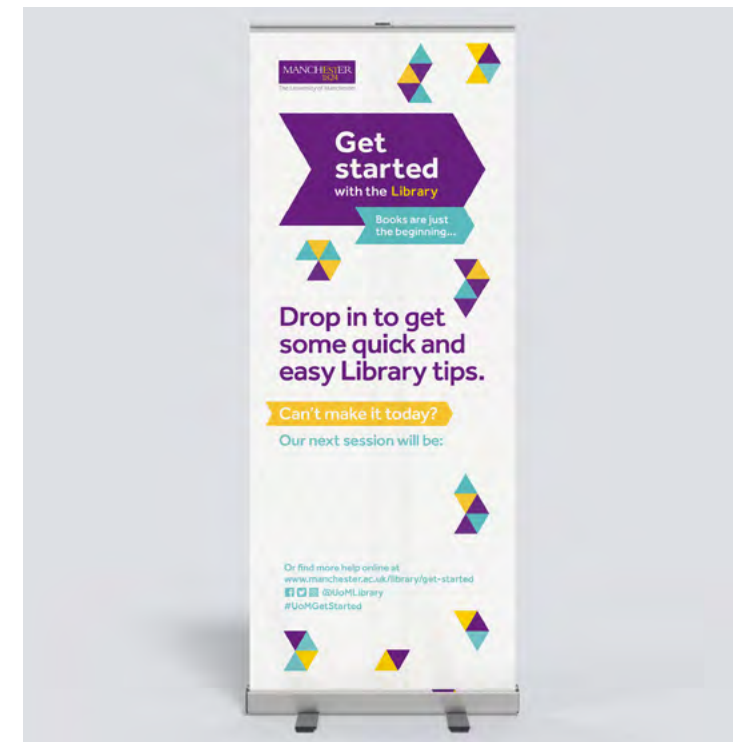
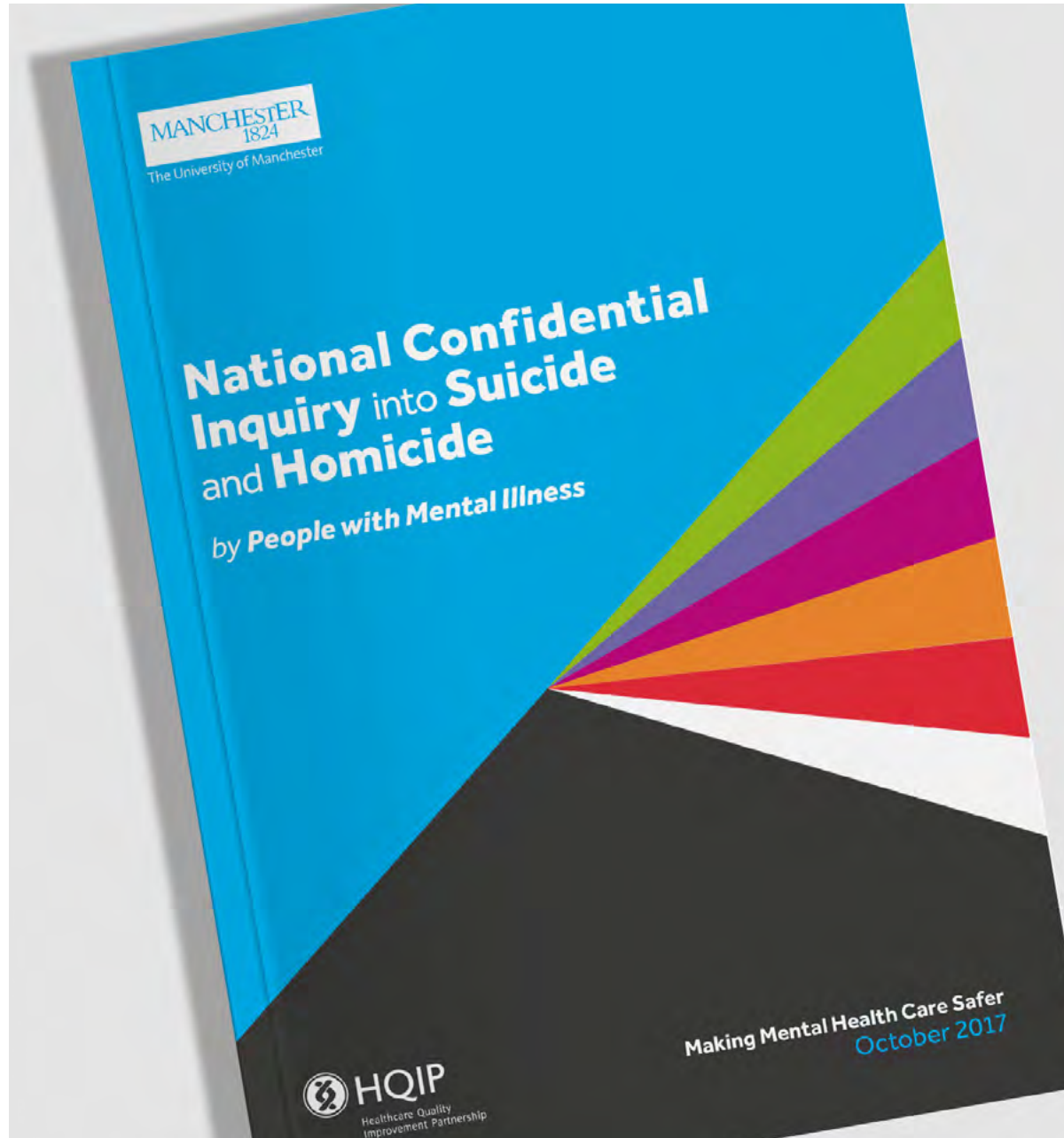
[www.manchester.ac.uk](http://www.manchester.ac.uk)









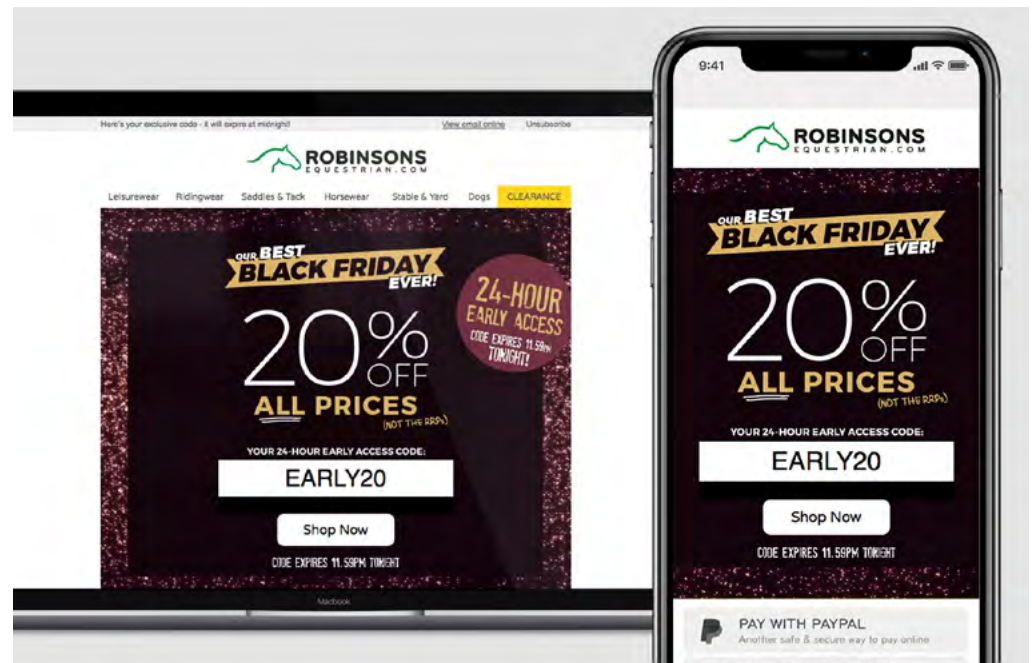
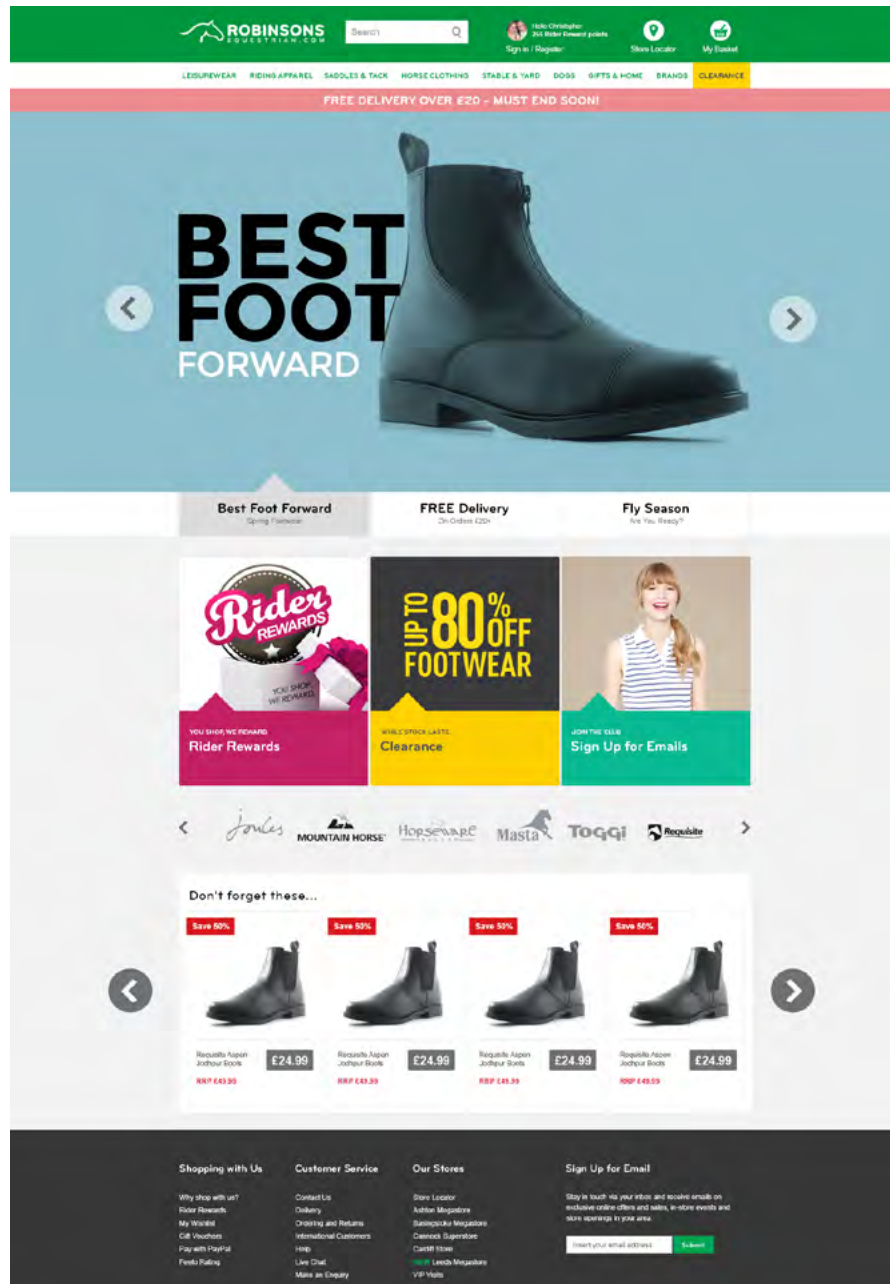




e-Commerce & retail design

## Robinsons Equestrian

- From email design and development to creating assets for web and social media.
- Working on seasonal catalogues for both digital and print.









Inspiring Healthy Lifestyles

## Printed marketing

Working with IHL to create engaging marketing collateral and signage to promote various campaigns to inspire the community to embrace happy and healthy lifestyles.

[inspiringhealthylifestyles.org](http://inspiringhealthylifestyles.org)





**LOSE WEIGHT**  
Real great!  
**FOR MEN**

# FREE

## 12<sup>WEEK</sup> HEALTH KICKSTARTER

+ SUPPORT TO EAT WELL

### LOSE WEIGHT YOUR WAY!

**GROUP OR INDIVIDUAL**



**TEAM FITNESS**



**1-2-1**



**MAN v FAT**



**WEARABLE TECH**



**SLIMMING WORLD**

**TEXT 'FIT' & 'YOUR NAME' TO 87800**  
OR CALL 01942 496 496

[www.wigan.gov.uk/LWFG](http://www.wigan.gov.uk/LWFG)










Inspiring healthy lifestyles

**HAPPY NEW YOU**

Join at your local leisure centre and discover a healthier, happier you.

Memberships from **£16** per month

- ♥ Inclusive gym, swim and classes!
- ♥ The latest technology and equipment.
- ♥ Varied and extensive class timetables
- ♥ Sauna, steam and swimming facilities\*
- ♥ Ongoing support from expert, friendly staff
- ♥ Fitness assessments and personalised training plans

Ashton Leisure Centre    Leigh Leisure Centre  
 Hindley Leisure Centre    Robin Park Leisure Centre  
 Howe Bridge Leisure Centre    Wigan Life Centre

**Real PEOPLE | Real RESULTS**




 Join at [leisurecentres.org](http://leisurecentres.org)

\*Larger membership starts at £26. Sauna, steam and swimming facilities are only available at selected centres. For full information, membership rules and terms and conditions please visit [leisurecentres.org](http://leisurecentres.org)

Wigan Council

Inspiring healthy lifestyles

Wigan Council

Enjoy a wide range of outdoor activities in Wigan at **Scotmans Flash and Haigh Woodland Park**

# outdoor activities

**SAIL | RIDE | CLIMB | KAYAK | PARTIES**

For more information email [outdooradventure@lhlmail.org](mailto:outdooradventure@lhlmail.org)

Age restrictions apply. Contact us for more information.

 [inspiringhealthylifestyles.org](http://inspiringhealthylifestyles.org)
 [lhlwigan](https://www.facebook.com/lhlwigan)

 [inspiringhealthylifestyles.org](http://inspiringhealthylifestyles.org)
 [lhlwigan](https://www.facebook.com/lhlwigan)



Lancashire Wildlife Trust

## Print & digital design

- Live a Little Wild campaign, including an interactive wheel to encourage exploring and visiting LWT sites
- Producing creative for annual brochures to signage for events, direct mail campaigns and so much more.

[www.lancswt.org.uk](http://www.lancswt.org.uk)





## BROCKHOLES

THE NATURAL PLACE TO DO BUSINESS



### WE THOUGHT #CHS18 ROCKED!

Did we inspire you to break out of the boardroom for your next event?

Our conference centre floats on a lake, within a cluster of eco-buildings, nestled amongst the reeds.

### SPECIAL OFFER FOR CHS VISITORS

Get a half price 'Welly Workout' for your delegates when you book a conference in XXXXXX. Call us on 01772 872005 for more information.

[Find Out More](#)



Spacious conference room for up to 130 delegates

Boardroom suitable for smaller meetings

Car parking included

[Find Out More](#)



Brockholes Nature Reserve  
Preston New Road, Sandhurst, WY5 4AT  
Company number: 07343427

You are receiving this email because you have signed up to the Brockholes mailing list. You can unsubscribe below.

Prefer more? Unsubscribe

[WWW.BROCKHOLES.ORG](http://WWW.BROCKHOLES.ORG)  
JUNCTION 51, M6 PRESTON



Lancashire, Manchester & Merseyside





# THE GREAT BOG HOP TRAIL

## Large Heath Butterfly

**ACTIVITY** Colour me in.

**DID YOU KNOW?** The Large Heath Butterfly is a rare species found only in the Levens Moss area. It is a large butterfly with a distinctive pattern on its wings.

## Red Fox

**ACTIVITY** What have I eaten?

**DID YOU KNOW?** Red foxes are found in the Levens Moss area. They are a common sight and are known for their cunning nature.

## Brown Hare

**ACTIVITY** Help me find my home.

**DID YOU KNOW?** Brown hares are found in the Levens Moss area. They are a common sight and are known for their speed.

## Water Vole

**ACTIVITY** Hop like a frog.

**DID YOU KNOW?** Water voles are found in the Levens Moss area. They are a common sight and are known for their ability to swim.

## Common Frog

**ACTIVITY** Yipeeee! I'm home.

**DID YOU KNOW?** Common frogs are found in the Levens Moss area. They are a common sight and are known for their croaking.

## Shrew

**ACTIVITY** Let's go bog trotting.

**DID YOU KNOW?** Shrews are found in the Levens Moss area. They are a common sight and are known for their small size.

## Wildfamilies

**ACTIVITY** What have I eaten?

**DID YOU KNOW?** Wildfamilies are found in the Levens Moss area. They are a common sight and are known for their family life.



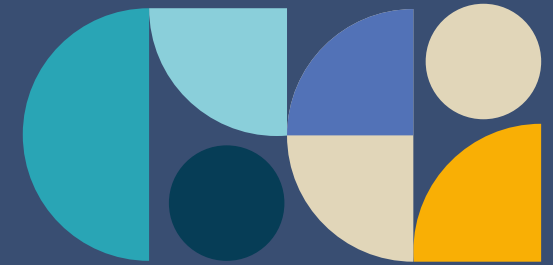


## GM Higher exhibition stand

- Digital animated artwork
- Floor vinyls
- Printed collateral
- Wall panels

[gmhigher.ac.uk](http://gmhigher.ac.uk)





**Thank you**  
**for getting this far!**

---

Contact

[cj.macx@me.com](mailto:cj.macx@me.com)  
07944 128666  
[chris-creative.co.uk](http://chris-creative.co.uk)

June 2023

 [chrisjudsoncreative](https://www.instagram.com/chrisjudsoncreative)